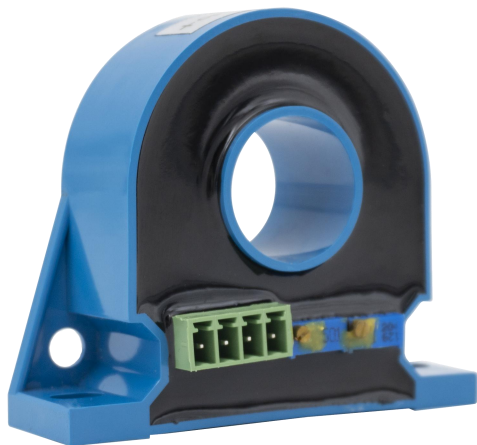


## TR0215A-LBH24

DC 200A/DC 10V



### Products Features

Capable of measuring AC, DC and pulse signals

Strong interference immunity with high CMRR

Low drift, fast response , wide bandwidth

Non-invasive through-hole design (zero insertion loss)

### Applications

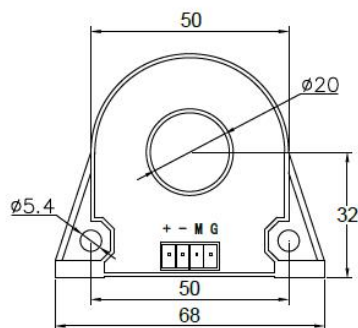
AC variable frequency drive systems

Servo motor traction control

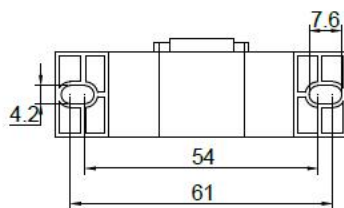
Uninterruptible power supplies (UPS)

Welding equipment & battery power systems

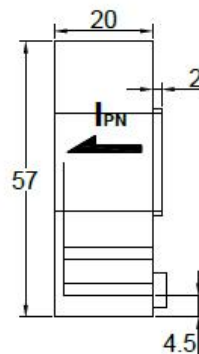
### Mechanical Dimension(mm)



Front View

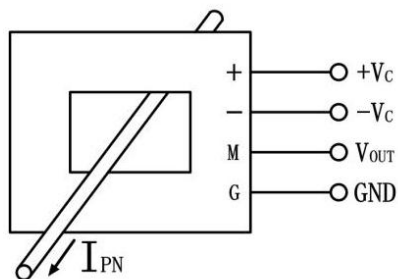


Bottom View



Left View

### Circuit Connection Diagram



Symbol	Description
$I_{PN}$	Primary-side Signal Input
+	Positive Power Supply
-	Negative Power Supply Or NC
M	Secondary-side Signal Output
G	GND

**Technical Data**@T<sub>A</sub>=25°C, unless otherwise stated

Type		TR0215A-LBH24
$I_{PN}$	Primary Rated Input Current	DC 200A
$I_P$	Primary Current Measure Range	DC 0~240A
$V_{SN}$	Secondary Rated Output Voltage	DC 10V
$U_C$	The Power Supply Voltage	DC +24V
	Power	0.5W
$X$	Accuracy	±1%
$BW$	Frequency Bandwith	DC~20kHz
	Overload Capacity	10 times
$U_d$	Power Frequency Withstand Voltage	5kV AC/1min
$t_r$	Response Time	≤10μs
$V_0$	Offset Voltage	≤30mV
	Temperature Drift	Maximum ≤±0.8%/°C
$T_A$	Ambient Operating Temperature	-25°C~+70°C
$T_S$	Ambient Storage Temperature	-40°C~+85°C

**Contact Information**

HUBEI TIANRUI ELECTRONIC CO.,LTD.

Add: No.8 Chuangye Road, Economic Development Zone, Tianmen 431700, Hubei, China

Website: www.hbtrec.com

E-mail: export@hbtianrui.com