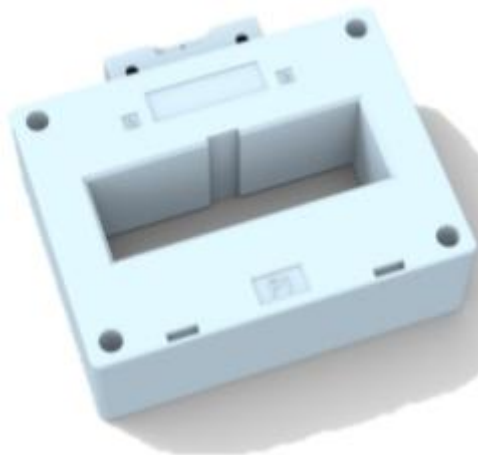


## TR-SDH0.66-100



## Products Features

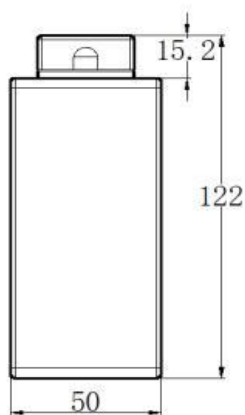
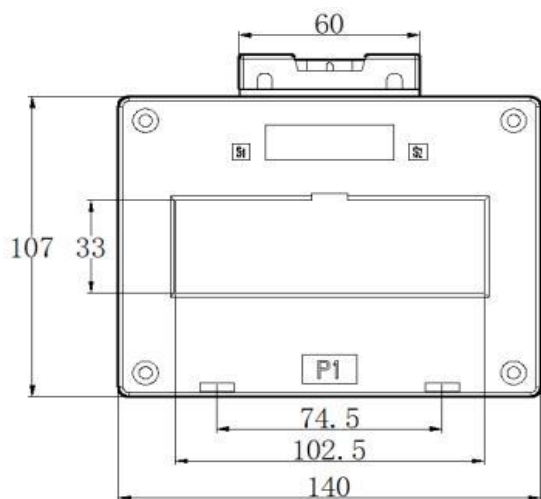
TR-BH and TR-SDH series current transformers have the characteristics of low price, high performance index, flexible installation mode and strong applicability, and can also be customized according to users' needs.

## Application

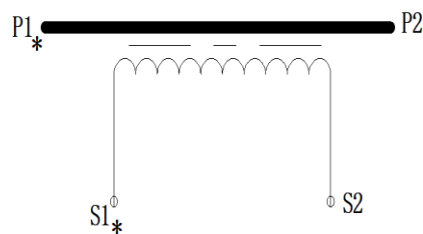
TR-BH and TR-SDH series current transformers are used in the protection test of GCS low-voltage draw-out switchgear, domino combined switchgear and high-power electrical equipment, and are suitable for AC circuits with rated voltage below 0.66kV.

## Mechanical dimension

### Dimension (mm)



### Electrical schematic diagram





## Technical data

Transformation Ratio	750/5(1)A	1000/5(1)A	1200/5(1)A	2000/5(1)A	2500/5(1)A
Rated Capacity(1.0 class)	10VA	10VA	10VA	20VA	20VA
Rated Capacity(0.5 class)	10VA	10VA	10VA	20VA	20VA
Rated Capacity(0.5S class)	10VA	10VA	10VA	20VA	20VA
Rated Capacity(0.2 class)	10VA	10VA	10VA	20VA	20VA
Rated Capacity(0.2S class)	10VA	10VA	10VA	20VA	20VA
Frequency	50Hz/60Hz				
Inner Diameter	33*102.5mm				
Tolerance	±2mm				
Power Frequency Withstand Voltage	3kV AC/1min				
Ambient Operating Temperature	-25°C~70°C				
Ambient Storage Temperature	-40°C~75°C				

## Contact information

HUBEI TIANRUI ELECTRONIC CO.,LTD.

Add: No.8 Chuangye Road, Econommic Development Zone, Tianmen 431700, Hubei, China

Website: [www.hbtrec.com](http://www.hbtrec.com)

Email: [export@hbtianrui.com](mailto:export@hbtianrui.com)