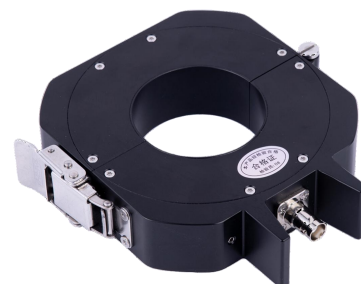


High-frequency Partial Discharge Monitoring Sensor

The split-core type high frequency partial discharge monitoring sensor is applied in switchgear, GIS, partial discharge monitoring of high-voltage electrical equipment such as generators and PT cabinets. It can provide real-time online monitoring and diagnosis of partial discharge situations that occur on high-voltage equipment.



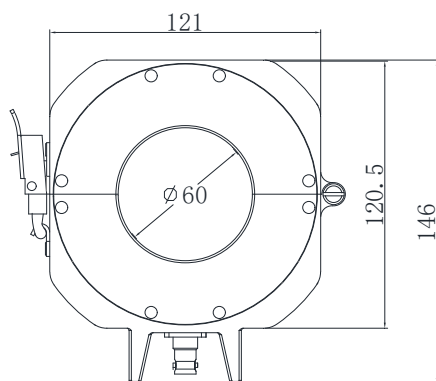
TRKHF

Technical data

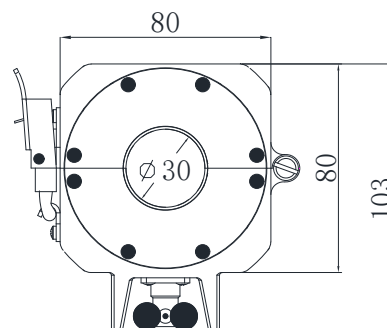
Electrical Parameters	Operating Frequency Range	0.1MHz~50MHz @TRKHF-60	Operating Frequency Range	0.5MHz~50MHz @TRKHF-30
	Sensitivity	5pC	Transmission Impedance	10mV/mA
	Matching Impedance	50Ω	Insulation Resistance	≥1000MΩ/500V DC
Mechanical Parameters	Protective Class	IP66 (the output interface needs to be protected)	Opening and Closing Structure	Buckle type or "304" screw fastening
	Output Connection	BNC-KF-1 female RF socket output	/	/
Operating Environment	Ambient Temperature	-45℃~+85℃	Altitude	≤4000 m
	Relative Humidity	≤90%RH @ 25℃	Other	No corrosive gas where working

Overall dimensions

Dimension unit: mm



TRKHF-60



TRKHF-30